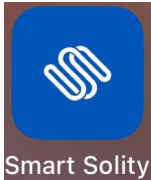
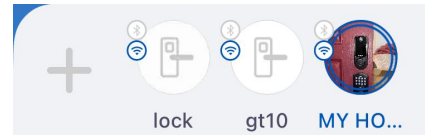


Add Pin Code through Smart Solity App

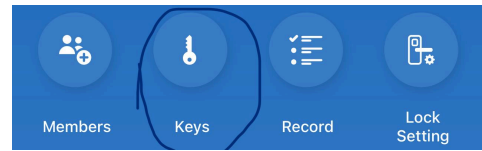
1. Open the Smart Solity App on your phone



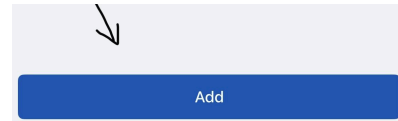
2. Make sure to select which lock you want to access



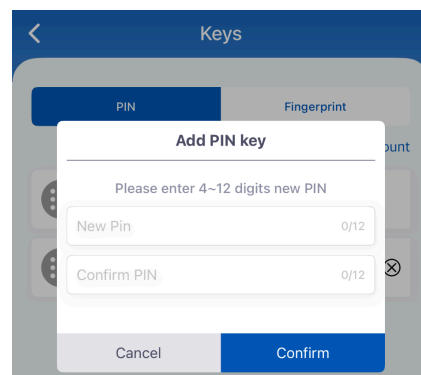
3. Click on “Keys” as shown in the image



4. At the bottom of the page you will click “Add”



5. You are going to create a new pin. It has to be between 4-12 digits long



6. Enter the new pin again to confirm the pin

7. New Pin is created